



# Rab 26 Polyclonal Antibody

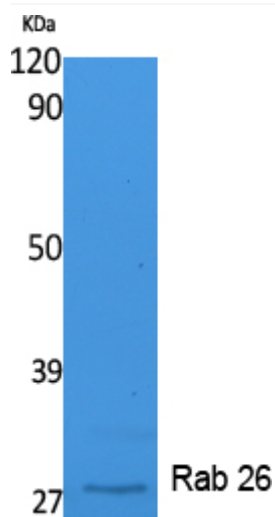
<b>Catalog No</b>	YP-Ab-16261
<b>Isotype</b>	IgG
<b>Reactivity</b>	Human;Mouse;Rat
<b>Applications</b>	WB;IHC;IF;ELISA
<b>Gene Name</b>	RAB26
<b>Protein Name</b>	Ras-related protein Rab-26
<b>Immunogen</b>	Synthesized peptide derived from Rab 26 . at AA range: 180-256
<b>Specificity</b>	Rab 26 Polyclonal Antibody detects endogenous levels of Rab 26 protein.
<b>Formulation</b>	Liquid in PBS containing 50% glycerol, 0.5% BSA and 0.02% sodium azide.
<b>Source</b>	Polyclonal, Rabbit,IgG
<b>Purification</b>	The antibody was affinity-purified from rabbit antiserum by affinity-chromatography using epitope-specific immunogen.
<b>Dilution</b>	WB: 1/500 - 1/2000. IHC-p: 1:100-300 ELISA: 1/40000.. IF 1:50-200
<b>Concentration</b>	1 mg/ml
<b>Purity</b>	≥90%
<b>Storage Stability</b>	-20°C/1 year
<b>Synonyms</b>	RAB26; Ras-related protein Rab-26
<b>Observed Band</b>	27kD
<b>Cell Pathway</b>	Golgi apparatus membrane ; Lipid-anchor ; Cytoplasmic side . Cytoplasmic vesicle, secretory vesicle membrane ; Lipid-anchor ; Cytoplasmic side . Not localized at the plasma membrane (By similarity). Inhibition of S-geranylgeranyl cysteine formation abolishes membrane location. .
<b>Tissue Specificity</b>	Predominantly expressed in brain.
<b>Function</b>	function:Participates in exocrine secretion: regulates the secretion of acinar granules in the parotid gland.,similarity:Belongs to the small GTPase superfamily. Rab family.,tissue specificity:Predominantly expressed in brain.,
<b>Background</b>	Members of the RAB protein family, including RAB26, are important regulators of vesicular fusion and trafficking. The RAB family of small G proteins regulates intercellular vesicle trafficking, including exocytosis, endocytosis, and recycling (summary by Seki et al., 2000 [PubMed 11043516]).[supplied by OMIM, Nov 2010],
<b>matters needing attention</b>	Avoid repeated freezing and thawing!



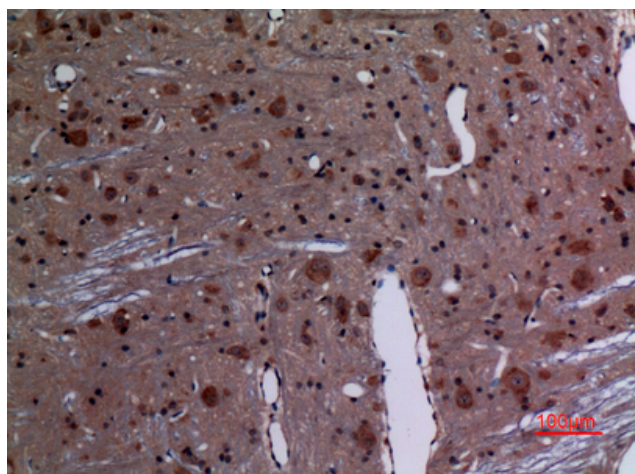
## Usage suggestions

This product can be used in immunological reaction related experiments. For more information, please consult technical personnel.

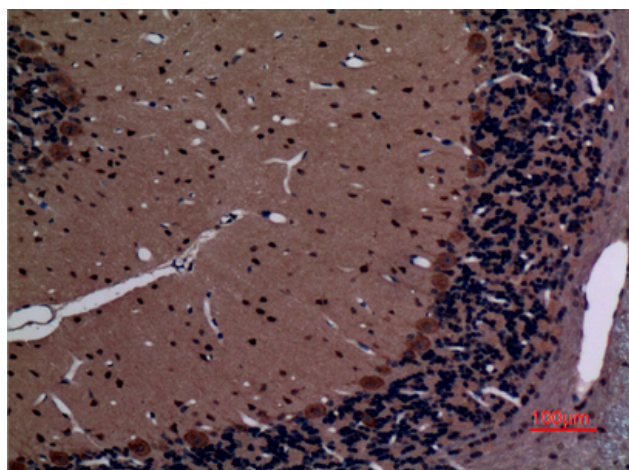
## Products Images



Western Blot analysis of extracts from K562 cells, using Rab 26 Polyclonal Antibody. Secondary antibody(catalog#:RS0002) was diluted at 1:20000



Immunohistochemical analysis of paraffin-embedded rat-brain, antibody was diluted at 1:100



Immunohistochemical analysis of paraffin-embedded rat-brain, antibody was diluted at 1:100